



TreeCulture Research Park



vineland
RESEARCH & INNOVATION CENTRE

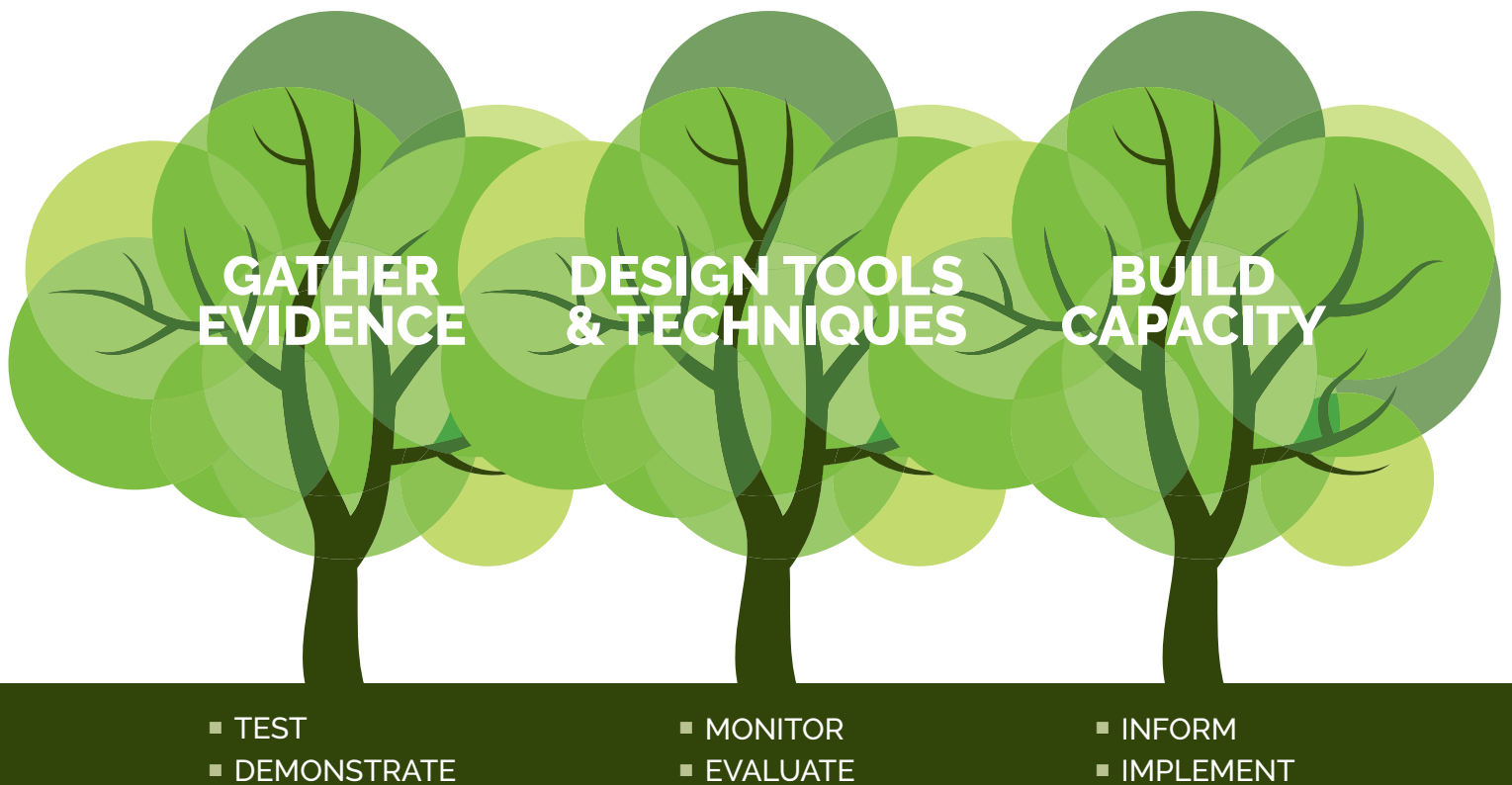
A New Vineland Initiative

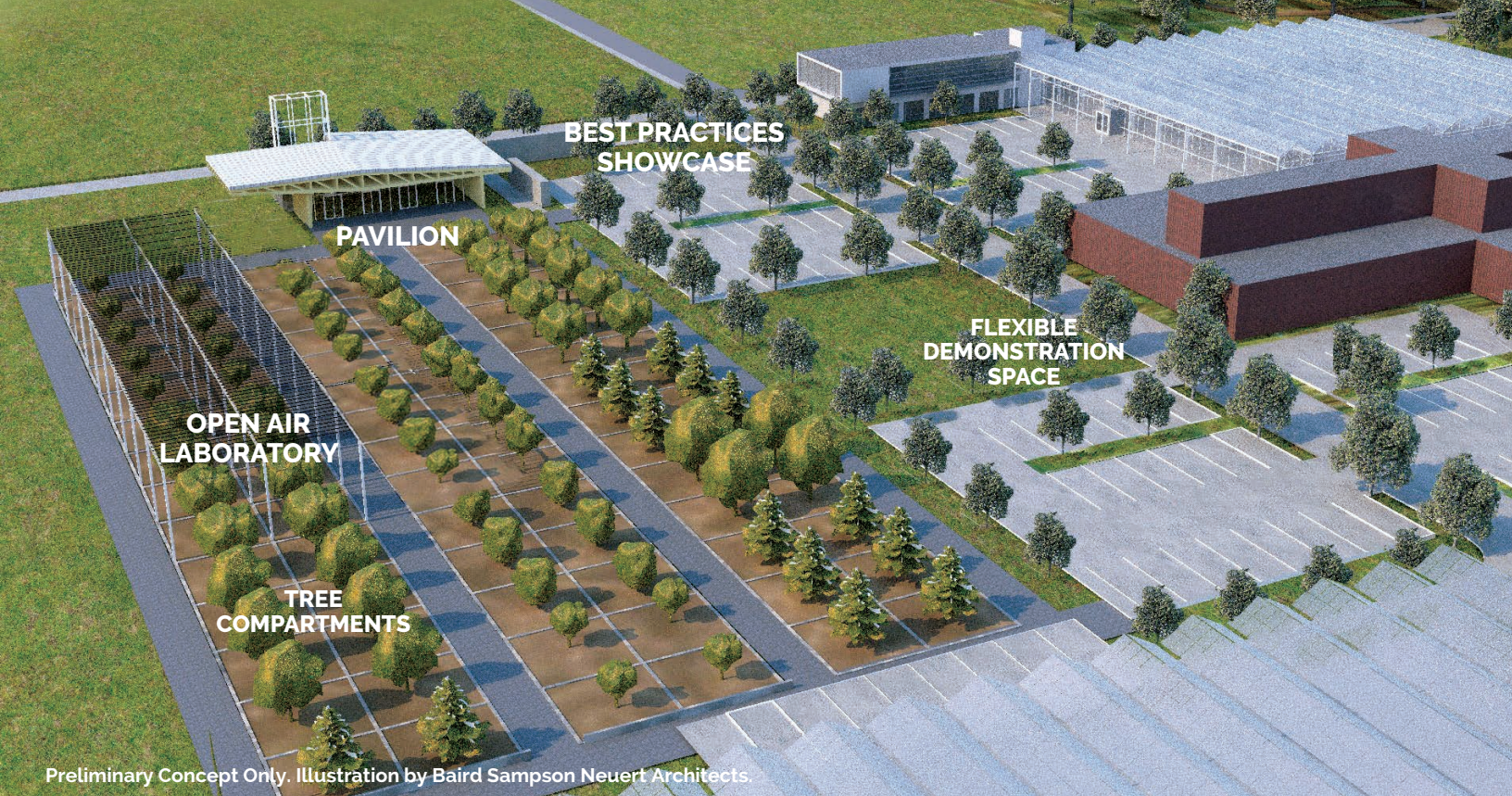
Vineland is uniquely positioned and ready to launch the TreeCulture Research Park initiative. For nearly a decade, our Greening the Landscape program has been working with partners across Canada, developing tools and techniques to improve the performance of trees and green infrastructure design.

The planned TreeCulture Research Park on Vineland's 218-acre campus includes laboratory, field testing and flexible spaces for collaboration, education and demonstration. This project – the first of its kind in Canada – fosters indoor and outdoor research opportunities, as well as hands-on learning and training.

Vineland's existing and future relationships with collaborators including Brock University's Environmental Sustainability Research Centre (ESRC) will provide opportunities to enhance our service offerings and provide linkages between academia and the business sector.

TreeCulture Research Park Pillars





Open Air Laboratory

Nearly the size of a CFL football field, the Open Air Laboratory is a 175-acre facility designed to recreate and improve on urban green infrastructure design. Tree compartments will provide replicated testing not available anywhere else in Canada. The compartments are individually instrumented to monitor the physiological and biological responses of trees, while creating soil and atmospheric environments mimicking urban conditions. Inputs to the compartments will be controllable, allowing for rigorous application of treatments. Combined with the instrumentation matrix, Vineland's TreeCulture Research Park will build the foundation of knowledge for urban forestry and evidence-based green infrastructure.

Pavilion

A multi-use hub for outreach and demonstration with a hands-on workshop facility to provide education and training opportunities.

Best Practices Showcase

This flexible demonstration space can be reconfigured over time to display and scale-up new techniques and technologies, products and tree selections emerging from the Open Air Laboratory. Interpretive signage will educate, inform and inspire.



4890 Victoria Avenue North, Box 4000, Vineland Station, ON LOR 2E0
info@vinelandresearch.com

